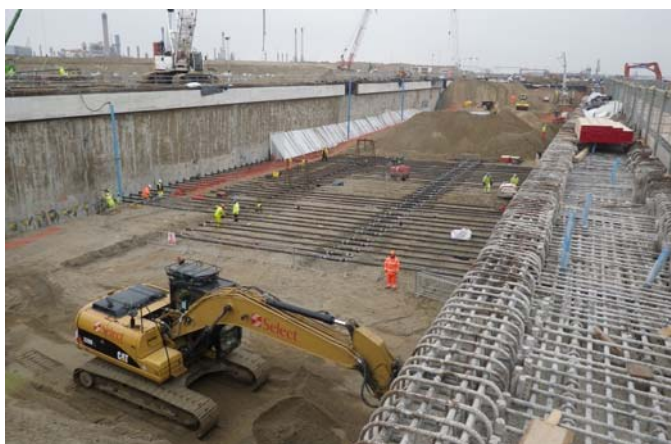


Project Profile



Project: London Gateway Port, River Thames - Diaphragm Wall Repairs

Client: Bachy Soletanche Ltd



Work is underway to construct "London Gateway" the latest deep-sea container port, 25 miles East of Central London. Project completion is due in 2013 when the port will be capable of accepting the worlds largest ships and with it the creation of 12,000 direct jobs and over 20,000 indirect jobs.

APA Concrete Repairs Ltd are working with the Client to deliver a series of concrete repair solutions for some of the difficulties encountered during the formation of the vast parallel diaphragm Walls that are each 2,700 metres long. The walls were constructed using the "top-down" method, using the ground as a concrete former before removing the earth either side to reveal a cast wall.

APA were employed to apply additional concrete cover & concrete repairs at targeted areas across the walls using Dry Spray concrete to protect the reinforcement that would be vulnerable from having little or no concrete cover.

In addition, **APA** provided a solution to deal with the ingress of water from the sea during high tides, this was completed using a combination of resin injection techniques and dry spray applied water proof concrete. The leaks were stemmed successfully so that further works could be progressed.



NORTHERN OFFICE

Black Brook Way
Greetland
Halifax
West Yorkshire
HX4 8ED
telephone: 01422 379 640
facsimile: 01422 374 938

SOUTHERN OFFICE

Abbey House
Wellington Way
Brooklands Business Park
Weybridge
London
KT13 0TT
telephone: 0208 853 0627

e-mail: info@apaconcreterepairs.co.uk **web:** www.apaconcreterepairs.co.uk